



Jefferson High School EXECUTIVE SUMMARY

PROVIDED BY FINDORFF

700 W. Milwaukee Street • Jefferson, WI

03.21.2024

Overview

The Findorff team is excited to bring you the first executive summary update for the Jefferson High School project! Crews have broken ground on-site and are putting concrete foundations in place, while excavation continues ahead to prep for ongoing foundation work. Demolition crews are beginning to mobilize for upcoming work in the Maintenance Shop and related classroom/office spaces. Work is progressing smoothly, and we are looking forward to keeping the district and community updated on this exciting project!

Progress Update

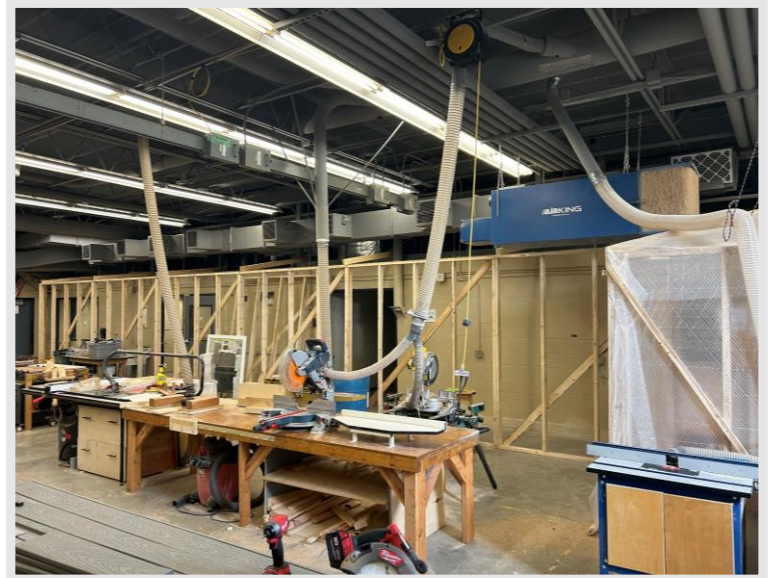
- Excavation for Skills Lab Addition ongoing
- Concrete footings and reinforcement following excavation
- Formwork and reinforcement for foundation walls
- Mobilization for demolition at Maintenance Shop and related Office/Classroom spaces
- Installation of temporary barriers near future demolition areas

Upcoming Work

- Demolition at Maintenance Shop and related Office/Classroom Areas
- MEPF cut, cap, and make safe demolition at Maintenance Shop and related Office/Classroom Areas
- Concrete slab saw-cutting and removal for MEP underground installation
- Ongoing foundation footing/wall pours at Skills Lab Addition
- Masonry wall erection at Skills Lab Addition when foundation work is complete



Findorff crews working to install footings and prep formwork and reinforcement for upcoming foundation wall pours.



Findorff carpentry crews working to put temporary barriers in place ahead of demolition work starting in the Maintenance Shop areas.

Safety is the number one priority!

Questions?

Project Manager, Jon Winch / (608) 219-5091 / jwinch@findorff.com

Findorff
BUILDING & BEYOND